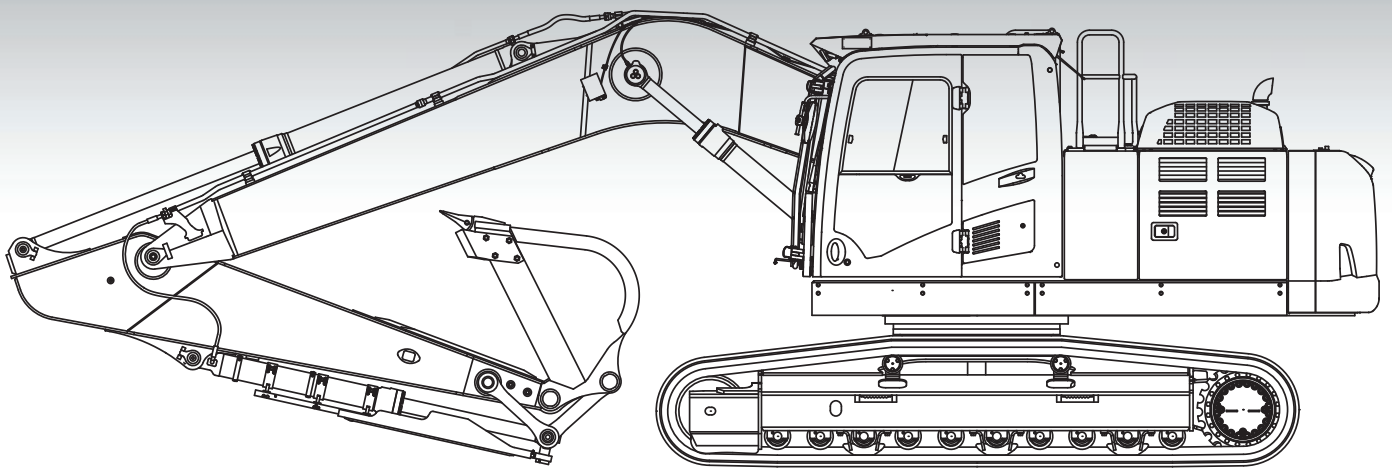
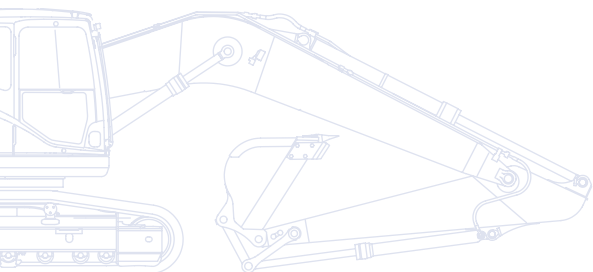


# KOMATSU



Demolition Excavators

## **PC210LC-10** **Mono Boom Demolition**



ENGINE POWER  
123 kW / 165 HP @ 2.000 rpm

OPERATING WEIGHT  
23.270 - 23.540 kg

# Walk-Around



## Work equipment

- Two additional hydraulic circuits piped with steel tubing to the end of the arm, suitable for demolition attachments

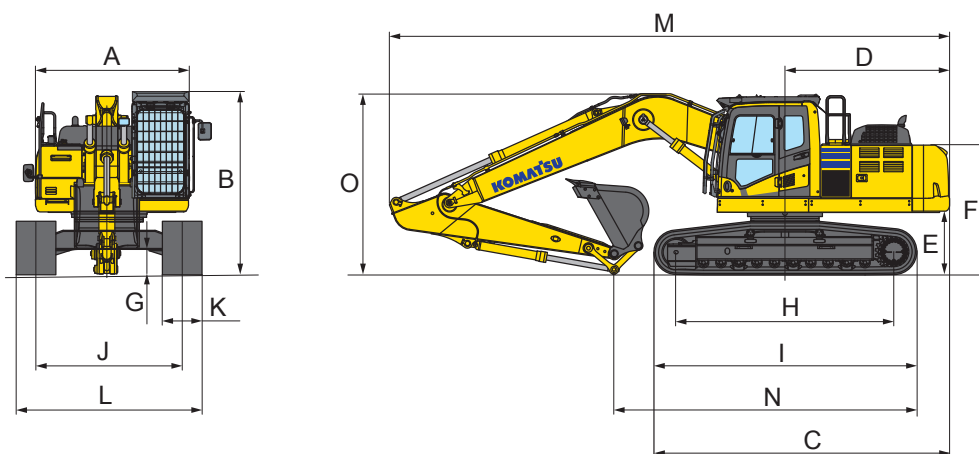
## Heavy duty protection

- Heavy duty undercovers (9 mm) fitted to the upper structure offer enhanced resistance to damage from debris on the ground
- Extra heavy duty side protection (15 mm) fitted to each side of the upper structure; bolted on, offering protection from debris on the ground or side impact
- Attachment cylinder guard (optional)
- Reinforced bucket linkage
- Boom lamp protection guard
- Full length track roller guards (optional)
- Additional camera, right side mounted (optional)

## Safety equipment

- Special Demolition Safety SpaceCab™ operator cabin (ROPS compliant with ISO 12117-2:2008)
- ISO 10262 Level 2 certified FOPS (Falling Object Protection System)
- Hinged front guard to allow easy access for windscreen cleaning
- Laminated glass roof window with wash wipe system
- Pressurised cabin helps to keep dust out. Climate control fitted as standard
- Joysticks with proportional control button for attachments
- Up to 5 different attachments can be pre set and named (5 breaker settings also available)
- Fully compliant with EN474-1 Annex G

# Dimensions & Specifications



## MACHINE DIMENSIONS

PC210LC-10

|   |                                       |             |
|---|---------------------------------------|-------------|
| A | Overall width of upper structure      | 2.705 mm    |
| B | Overall height of cab (including OPG) | 3.255 mm    |
| C | Overall length of basic machine       | 5.135 mm    |
| D | Tail length                           | 2.910 mm    |
|   | Tail swing radius                     | 2.940 mm    |
| E | Clearance under counterweight         | 1.085 mm    |
| F | Machine tail height                   | 2.250 mm    |
| G | Ground clearance                      | 440 mm      |
| H | Tumbler centre distance               | 3.655 mm    |
| I | Track length                          | 4.450 mm    |
| J | Track gauge                           | 2.380 mm    |
| K | Track shoe width                      | 600, 700 mm |
| L | Overall track width with 600 mm shoes | 2.980 mm    |
|   | Overall track width with 700 mm shoes | 3.080 mm    |

## TRANSPORT DIMENSIONS

|   |                                 |          |
|---|---------------------------------|----------|
|   | Arm length                      | 2,9 m    |
| M | Transport length                | 9.625 mm |
| N | Length on ground (transport)    | 4.450 mm |
| O | Overall height (to top of boom) | 3.135 mm |

## OPERATING WEIGHT (APPR.)

| Triple grouser shoes | Operating weight | Ground pressure         |
|----------------------|------------------|-------------------------|
| 600 mm               | 23.170 kg        | 0,49 kg/cm <sup>2</sup> |
| 700 mm               | 23.540 kg        | 0,42 kg/cm <sup>2</sup> |

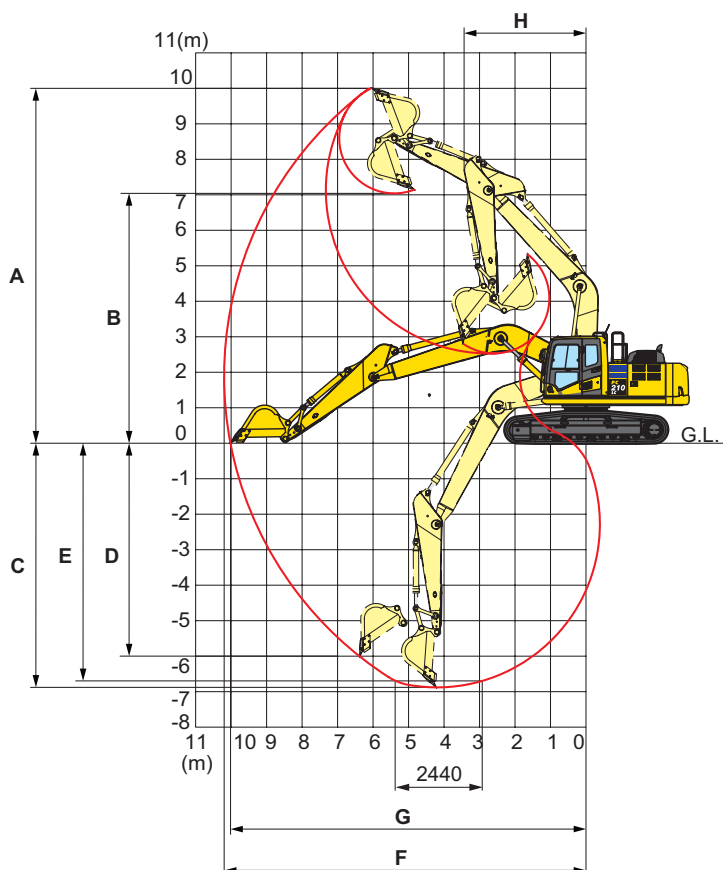
Operating weight, including specified work equipment, 2,9 m arm, 760 kg bucket, operator, lubricant, coolant, full fuel tank.

# Demolition Excavators

## PC210LC-10

### Mono Boom Demolition

#### WORKING RANGE



| ARM LENGTH                                   | 2,9 m     |
|--|-----------|
| A Max. digging height                        | 10.000 mm |
| B Max. dumping height                        | 7.110 mm  |
| C Max. digging depth                         | 6.620 mm  |
| D Max. vertical wall digging depth           | 5.980 mm  |
| E Max. digging depth of cut for 2,44 m level | 6.370 mm  |
| F Max. digging reach                         | 9.875 mm  |
| G Max. digging reach at ground level         | 9.700 mm  |
| H Min. swing radius                          | 3.040 mm  |

Specifications: Engine power at rated engine speed (2.000 rpm): 123 kW/165 HP (ISO 14396). Engine emissions fully complies with EU Stage IIIB exhaust emission regulations. Noise levels: LwA external: 102 dB(A) (2000/14/EC Stage II). LpA operator ear: 69 dB(A) (ISO 6396 dynamic test. Vibration levels (EN 12096:1997): Hand/arm:  $\leq 2,5 \text{ m/s}^2$  (uncertainty K = 0,49 m/s<sup>2</sup>) Body:  $\leq 0,5 \text{ m/s}^2$  (uncertainty K = 0,24 m/s<sup>2</sup>). Contains fluorinated greenhouse gas HFC-134a (GWP 1430). Quantity of gas 0,9 kg, CO<sub>2</sub> equivalent 1,29 t.