

KOMATSU

PC210LC/NLC-8 Waste & Recycling Specification

ENGINE POWER
116 kW / 156 HP @ 2.000 rpm

OPERATING WEIGHT
PC210LC-8: 21.990 - 23.750 kg
PC210NLC-8: 21.830 - 23.360 kg

BUCKET CAPACITY
max. 1,68 m³

PC
210

HYDRAULIC EXCAVATOR



PC210LC/NLC-8

ecot3

WALK-AROUND

The PC210-8 „Waste & Recycling“ specification machine is purposely built for the recycling industry in Europe. It delivers productivity, reliability and operator comfort even in the harsh environment found in bulk waste transfer stations. It is fitted with special features aimed at minimising the frequency and duration of maintenance activity.



2 additional hydraulic power circuits standard

- Suitable for rotating sorting grapple
- Full flowrate for open/close function
- Reduced flowrate for rotation function



Full length track roller guards optional.



Joysticks

with proportional control button for attachments.



Choice of two arms – 2,4 or 2,9 m arm, with mono boom. Allows customisation to suit particular working areas.

ENGINE POWER
116 kW / 156 HP @ 2.000 rpm

OPERATING WEIGHT
PC210LC-8: 21.990 - 23.750 kg
PC210NLC-8: 21.830 - 23.360 kg

BUCKET CAPACITY
max. 1,68 m³



Special air flow management:

Enclosed top covers force the cooling air to pass through mesh filters. Allows correct amount of cooling air into the machine body and the mesh filter resists particle flow into the machine body - easy to clean. Minimises number of particles inside the machine structure, minimises risk of blockage to cooler air passages. Side by side cooling pack with improved access for cleaning.

The Dash 8 „Waste & Recycling“ specification includes:

- Closed upper structure covers
- Open side cover
- Air conditioning condensor with electric fan
- Engine air intake pre cleaner
- Special, covered exhaust muffler



ISO 10262 Level 2 certified FOPS (optional)
(Falling Object Protection System)



Heavy duty undercovers are fitted to the upper structure offering enhanced resistance to damage from debris on the ground.

SPECIFICATIONS



ENGINE

Model.....Komatsu SAA6D107E-1
 Type..... Common rail direct injection, water-cooled, emissionised, turbocharged, after-cooled diesel

Engine power
 at rated engine speed 2.000 rpm
 ISO 14396..... 116 kW / 156 HP
 ISO 9249 (net engine power)..... 110 kW / 148 HP

No. of cylinders..... 6
 Bore x stroke..... 107 x 124 mm
 Displacement..... 6,69 ltr
 Battery 2 x 12 V/140 Ah
 Alternator 24 V/60 A
 Starter motor 24 V/5,5 kW
 Air filter type Double element type with monitor panel dust indicator and auto dust evacuator
 Cooling Suction type cooling fan with radiator fly screen



HYDRAULIC SYSTEM

Type..... HydrauMind. Closed-centre system with load sensing and pressure compensation valves

Additional circuits2 additional circuits installed as standard

Main pump.....2 variable displacement piston pumps supplying boom, arm, bucket, swing and travel circuits

Maximum pump flow 2 x 219 ltr/min

Relief valve settings
 Implement 380 bar
 Travel 380 bar
 Swing 295 bar
 Pilot circuit..... 33 bar



ENVIRONMENT

Engine emissions Fully complies with EU Stage IIIA and EPA Tier III exhaust emission regulations

Noise levels
 LwA external 102 dB(A) (2000/14/EC Stage II)
 LpA operator ear 69 dB(A) (ISO 6396 dynamic test)



OPERATING WEIGHT (APPR.)

Operating weight, including 2,9 m arm, 900 kg bucket, operator, lubricant, coolant, full fuel tank and the standard equipment.



SWING SYSTEM

Type Axial piston motor driving through planetary double reduction gearbox

Swing lock Electrically actuated wet multi-disc brake integrated into swing motor

Swing speed 0 - 12,4 rpm
 Swing torque 68 kNm
 Max. pressure..... 295 bar



DRIVES AND BRAKES

Steering control2 levers with pedals giving full independent control of each track

Drive method Hydrostatic

Travel operation Automatic 3-speed selection

Gradeability 70%, 35°

Max. travel speeds
 Lo / Mi / Hi..... 3,0 / 4,1 / 5,5 km/h

Maximum drawbar pull 18.200 kg

Brake system..... Hydraulically operated discs in each travel motor



UNDERCARRIAGE

Construction X-frame centre section with box section track frames

Track assembly
 Type Fully sealed

Shoes (each side) 49 (PC210LC/NLC)

Tension..... Combined spring and hydraulic unit

Rollers
 Track rollers (each side)..... 9 (PC210LC/NLC)
 Carrier rollers (each side) 2

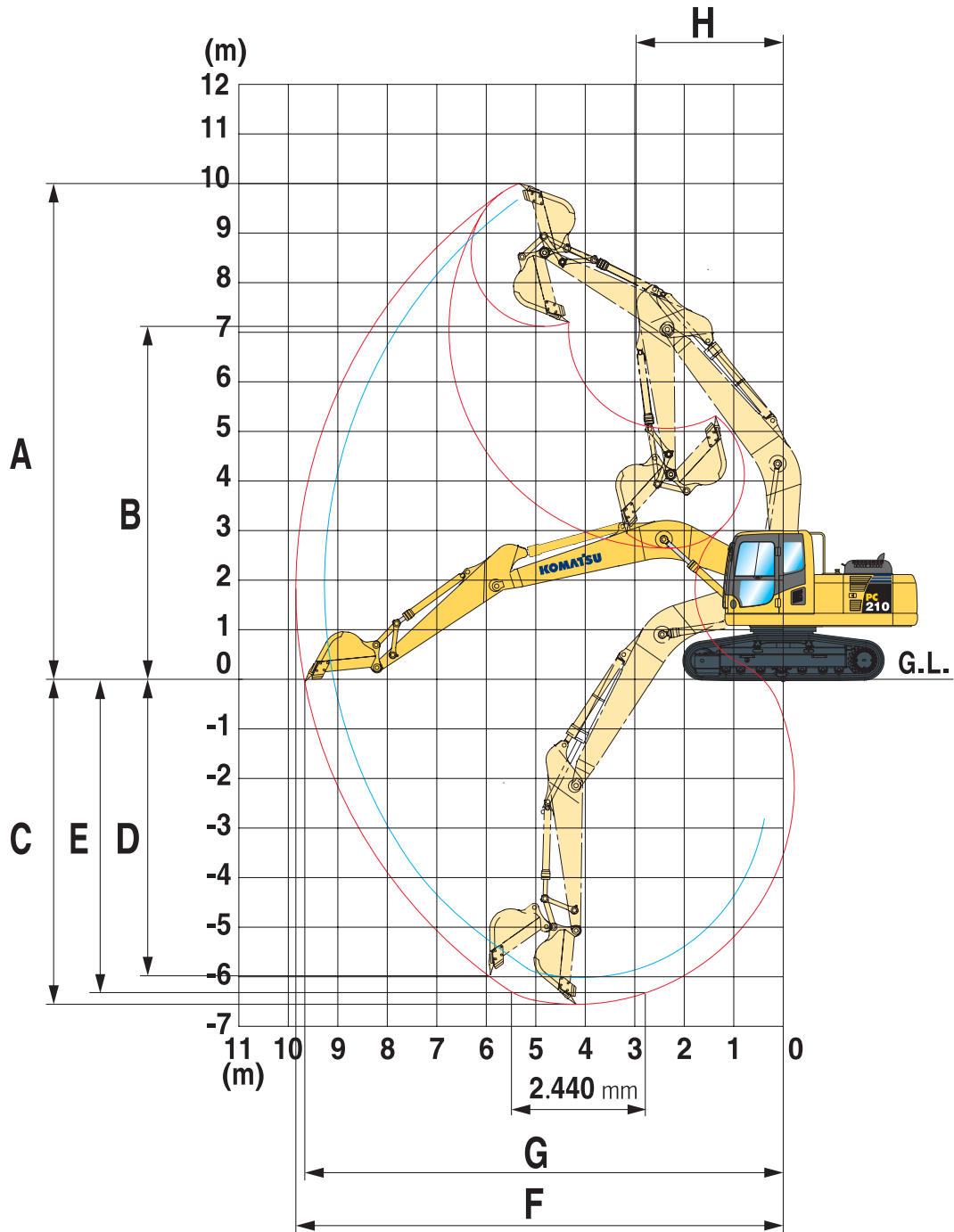


COOLANT AND LUBRICANT CAPACITY (REFILLING)

Fuel tank..... 325,0 ltr
 Radiator 20,4 ltr
 Engine oil..... 23,1 ltr
 Swing drive 6,6 ltr
 Hydraulic tank..... 137,0 ltr
 Final drive (each side) 3,3 ltr

MONO BOOM				
	PC210LC-8		PC210NLC-8	
	Operating weight	Ground pressure	Operating weight	Ground pressure
Triple grouser shoes				
600 mm	21.990 kg	0,46 kg/cm ²	22.190 kg	0,47 kg/cm ²
700 mm	22.260 kg	0,40 kg/cm ²	22.460 kg	0,40 kg/cm ²
800 mm	22.580 kg	0,36 kg/cm ²	-	-
900 mm	22.850 kg	0,32 kg/cm ²	-	-

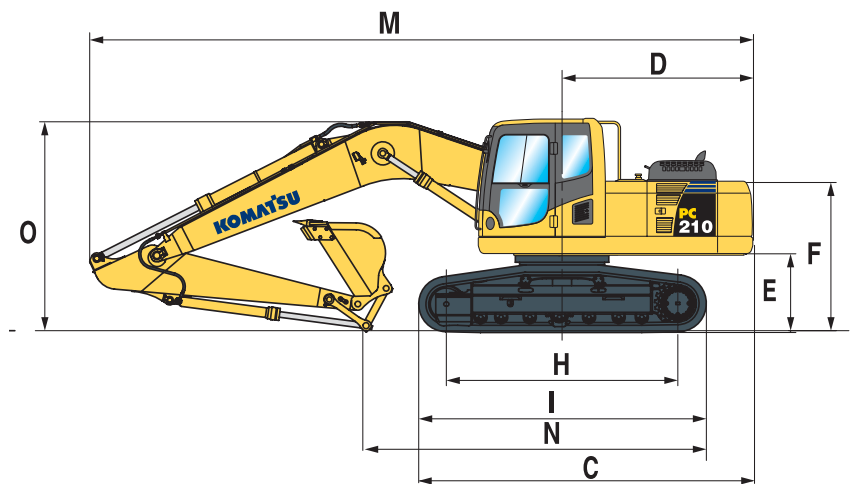
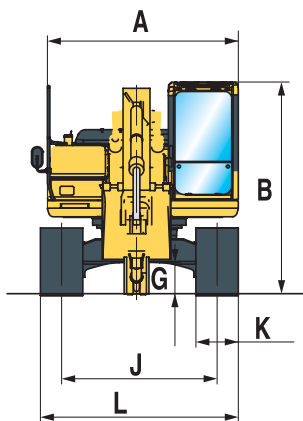
WORKING RANGE



ARM LENGTH		2,4 m	2,9 m
A	Max. digging height	9.800 mm	10.000 mm
B	Max. dumping height	6.890 mm	7.110 mm
C	Max. digging depth	6.095 mm	6.620 mm
D	Max. vertical wall digging depth	5.430 mm	5.980 mm
E	Max. digging depth of cut for 2,44 m level	5.780 mm	6.370 mm
F	Max. digging reach	9.380 mm	9.875 mm
G	Max. digging reach at ground level	9.190 mm	9.700 mm
H	Min. swing radius	3.090 mm	3.040 mm

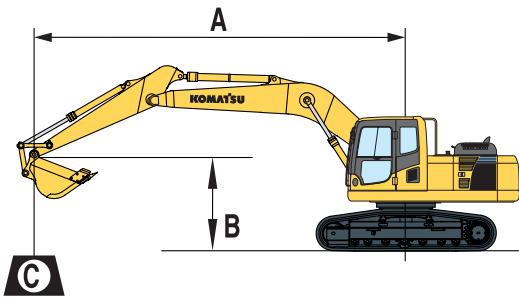
TRANSPORT DIMENSIONS

MACHINE DIMENSIONS		PC210LC	PC210NLC
A	Overall width of upper structure	2.500 mm	2.500 mm
B	Overall height of cab	3.035 mm	3.035 mm
C	Overall length of basic machine	4.995 mm	4.995 mm
D	Tail length	2.770 mm	2.770 mm
	Tail swing radius	2.800 mm	2.800 mm
E	Clearance under counterweight	1.100 mm	1.100 mm
F	Machine tail height	2.110 mm	2.110 mm
G	Ground clearance	440 mm	440 mm
H	Tumbler centre distance	3.655 mm	3.655 mm
I	Track length	4.450 mm	4.450 mm
J	Track gauge	2.380 mm	2.040 mm
K	Track shoe width	600, 700, 800, 900 mm	500, 600, 700 mm
L	Overall track width with 500 mm shoe	–	2.540 mm
	Overall track width with 600 mm shoe	2.980 mm	2.640 mm
	Overall track width with 700 mm shoe	3.080 mm	2.740 mm
	Overall track width with 800 mm shoe	3.180 mm	–
	Overall track width with 900 mm shoe	3.280 mm	–



ARM LENGTH		MONO BOOM	
		2,4 m	2,9 m
M	Transport length	9.555 mm	9.485 mm
N	Length on ground (transport)	5.885 mm	5.000 mm
O	Overall height (to top of boom)	3.190 mm	2.970 mm

LIFTING CAPACITY



A – Reach from swing centre

B – Bucket hook height

C – Lifting capacities, including bucket (760 kg), bucket linkage (200 kg) and bucket cylinder (140 kg)

When removing bucket, linkage or cylinder, lifting capacities can be increased by their respective weights

With 500 mm shoes

– Rating over front

– Rating over side

– Rating at maximum reach

Arm length	B	A		7,5 m		6,0 m		4,5 m		3,0 m		1,5 m	

PC210LC-8

	7,5 m	kg	*2.800	*2.800			*4.150	*4.150						
	6,0 m	kg	*2.650	*2.650	*3.450	3.200	*4.250	*4.250						
	4,5 m	kg	*2.650	2.500	*4.550	3.150	*4.850	4.750	*5.400	*5.400				
	3,0 m	kg	*2.750	2.250	4.900	3.050	*5.800	4.450	*7.350	7.100	*11.450	*11.450		
	1,5 m	kg	*3.000	2.200	4.750	2.900	*6.750	4.150	*9.250	6.450	*6.350	*6.350		
	0,0 m	kg	*3.400	2.200	4.600	2.750	6.600	3.950	*10.450	6.050	*7.200	*7.200		
	-1,5 m	kg	4.050	2.400	4.550	2.700	6.450	3.800	10.450	5.900	*10.450	*10.450	*6.300	*6.300
	-3,0 m	kg	4.800	2.900			6.450	3.850	*10.450	5.950	*15.250	11.900	*10.050	*10.050
	-4,5 m	kg	*6.300	4.000					*9.000	6.150	*12.950	12.350		

	7,5 m	kg	*4.150	*4.150										
	6,0 m	kg	*3.950	3.450			*4.750	*4.750						
	4,5 m	kg	*3.950	2.850	4.950	3.100	*5.350	4.650	*6.200	*6.200				
	3,0 m	kg	4.150	2.550	4.850	3.000	*6.200	4.350	*8.050	6.900				
	1,5 m	kg	4.050	2.450	4.700	2.850	6.750	4.100	*9.800	6.350				
	0,0 m	kg	4.150	2.500	4.600	2.750	6.550	3.900	10.550	6.000	*6.750	*6.750		
	-1,5 m	kg	4.600	2.750	4.600	2.750	6.450	3.850	10.500	5.950	*11.600	*11.600	*7.300	*7.300
	-3,0 m	kg	5.650	3.400			6.550	3.900	*10.150	6.050	*14.500	12.100	*12.150	*12.150
	-4,5 m	kg	*6.800	5.150					*8.100	6.300	*11.500	*11.500		

PC210NLC-8

	7,5 m	kg	*2.800	*2.800			*4.150	*4.150						
	6,0 m	kg	*2.650	2.550	*3.450	2.750	*4.250	*4.250						
	4,5 m	kg	*2.650	2.150	*4.550	2.700	*4.850	4.100	*5.400	*5.400				
	3,0 m	kg	*2.750	1.900	4.950	2.600	*5.800	3.800	*7.350	6.050	*11.450	*11.450		
	1,5 m	kg	*3.000	1.800	4.800	2.450	*6.750	3.550	*9.250	5.350	*6.350	*6.350		
	0,0 m	kg	*3.400	1.850	4.650	2.350	6.650	3.300	*10.450	5.100	*7.200	*7.200		
	-1,5 m	kg	4.100	2.000	4.600	2.300	6.500	3.150	10.600	4.800	*10.450	8.800	*6.300	*6.300
	-3,0 m	kg	4.850	2.400			6.550	3.200	*10.450	4.950	*15.250	9.600	*10.050	*10.050
	-4,5 m	kg	*6.300	3.400					*9.000	5.150	*12.950	10.000		

	7,5 m	kg	*4.150	4.150										
	6,0 m	kg	*3.950	2.950			*4.750	4.150						
	4,5 m	kg	*3.950	2.450	*4.950	2.650	*5.350	4.000	*6.200	*6.200				
	3,0 m	kg	*4.200	2.150	4.900	2.550	*6.200	3.750	*8.050	5.850				
	1,5 m	kg	4.100	2.050	4.750	2.400	6.850	3.500	*9.800	5.200				
	0,0 m	kg	4.200	2.100	4.650	2.350	6.650	3.300	10.700	5.050	*6.750	*6.750		
	-1,5 m	kg	4.650	2.300	4.650	2.300	6.550	3.200	10.600	4.800	*11.600	8.900	*7.300	*7.300
	-3,0 m	kg	5.700	2.850			6.600	3.300	*10.150	5.050	*14.500	9.750	*12.150	*12.150
	-4,5 m	kg	*6.800	4.350					*8.100	5.300	*11.500	10.250		

* Load is limited by hydraulic capacity rather than tipping.

Ratings are based on SAE Standard No. J1097.

Rated loads do not exceed 87% of hydraulic lift capacity or 75% of tipping load.

WASTE & RECYCLING SPECIFICATION

STANDARD EQUIPMENT

- | | | | |
|---|--|---|---|
| <ul style="list-style-type: none"> • Komatsu SAA6D107E-1, 116 kW turbocharged common rail direct injection diesel engine, EU Stage IIIA compliant • Double element type air cleaner with dust indicator and auto dust evacuator • Suction type cooling fan with radiator fly screen • External air conditioning condenser with electric fan • Special exhaust muffler • Engine air pre-cleaner • Automatic fuel line de-aeration • Automatic engine warm-up system • Engine overheat prevention system • Fuel control dial • Auto-deceleration function • Engine key stop • Alternator 24 V/60 A • Batteries 2 × 12 V/140 Ah • Starter motor 24 V/5,5 kW • Electronic closed-centre load sensing (E-CLSS) hydraulic system (HydrauMind) • Pump and engine mutual control | <ul style="list-style-type: none"> (PEMC) system • Multi-function video compatible colour monitor with equipment management monitoring system (EMMS) and efficiency guidance • 5-working mode selection system; Power mode, economy mode, breaker mode, attachment mode and lifting mode • PowerMax function • Standard counterweight • Two additional hydraulic circuits, piped to the arm end • Hydrostatic, 3-speed travel system with automatic shift and planetary gear type final drives, and hydraulic travel and parking brakes • Adjustable PPC wrist control levers with 3 button controls for arm, boom, bucket and swing • PPC control levers and pedals for steering and travel • KOMTRAX™ Komatsu Tracking System • Reinforced safety SpaceCab™; Highly pressurised and tightly | <ul style="list-style-type: none"> sealed hyper viscous mounted cab with tinted safety glass windows, large roof window with sun shade, pull-up type front window with locking device, removable lower window, front window wiper with intermittent feature, sun roller blind, cigarette lighter, ashtray, luggage shelf, floor mat • Heated air suspension seat with lumbar support, height adjustable arm rests and retractable seat belt • Automatic climate control system • Rear view camera system • 12 Volt power supply • Beverage holder and magazine rack • Hot and cool box • Radio • Overload warning device • Electric horn • Audible travel alarm • Track roller guards • Heavy duty revolving frame undercovers • Lockable fuel cap and covers • Remote greasing for swing circle | <ul style="list-style-type: none"> and pins • Fuel supply pump • Boom safety valves • Large handrails, rear-view mirrors • Toolkit and spare parts for first service • Lights; 2 revolving frame lights and 1 boom light • Quick-coupler piping • Engine ignition can be password secured on request • Standard colour scheme and decals • Parts book and operator manual |
|---|--|---|---|

OPTIONAL EQUIPMENT

- | | | | |
|---|---|--|--|
| <ul style="list-style-type: none"> • LC and NLC undercarriages • 600, 700, 800, 900 mm triple grouser track-shoes • Mono boom • 2,4 m; 2,9 m arms • Additional hydraulic circuits • Full length track roller guards | <ul style="list-style-type: none"> • Bucket linkage with lifting eye • Arm safety valve • OPG Level II front guard (FOPS) • OPG Level II top guard (FOPS) • Service points • Additional working lamps, including cab roof lights, r.h. boom lamp, | <ul style="list-style-type: none"> counterweight rear lamp and beacon • Bio oil • Lower wiper • Rain visor (not with OPG) • Komatsu buckets • Komatsu quick couplers | <ul style="list-style-type: none"> • Customised paint • Further equipment on request |
|---|---|--|--|



Komatsu Europe International NV
 Mechelsesteenweg 586
 B-1800 VILVOORDE (BELGIUM)
 Tel. +32-2-255 24 11
 Fax +32-2-252 19 81
 www.komatsueurope.com