

KOMATSU®

NET HORSEPOWER
257 kW 345 HP @ 1.900 rpm

OPERATING WEIGHT
48.305 - 65.000 kg

ATTACHMENT TOOL WEIGHT
2.500 kg

PC450LC-7 27 m Demolition Specification

PC
450

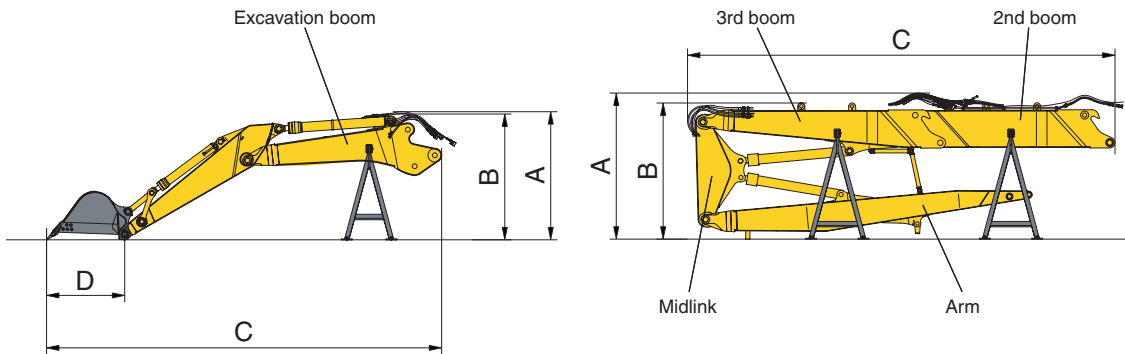
HYDRAULIC EXCAVATOR



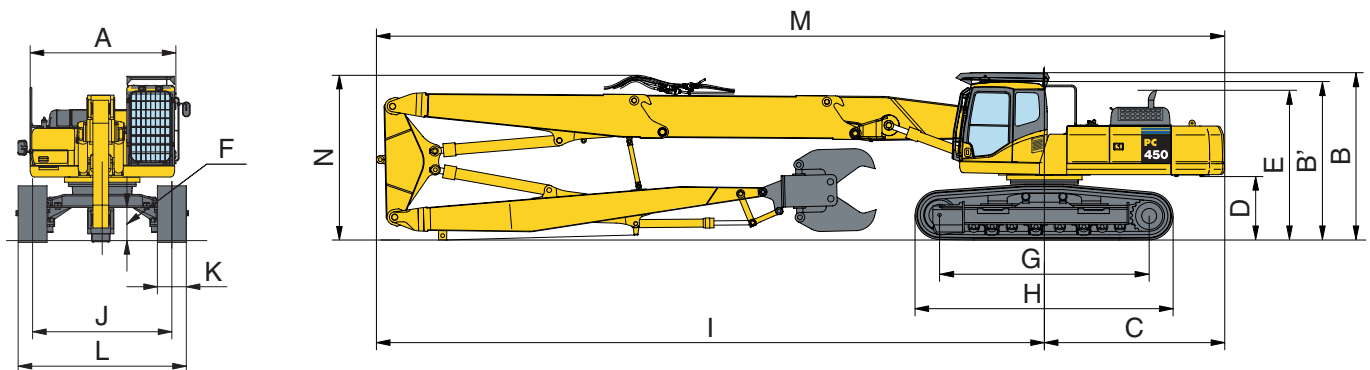
PC450LC-7

ecot3

MACHINE DIMENSIONS



	WORK EQUIPMENT TRANSPORT DIMENSIONS	EXCAVATION BOOM		HIGH REACH BOOM
		2,9 m arm	3,4 m arm	
A	Total height (incl. hydraulic lines)	3.025 mm		3.425 mm
B	Height	2.980 mm		3.250 mm
C	Length	8.780 mm	9.330 mm	11.412 mm
D	Tip radius	1.845 mm		-
	Total weight (incl cylinders, links and hydraulic lines)	8.605 kg	8.550 kg	9.400 kg



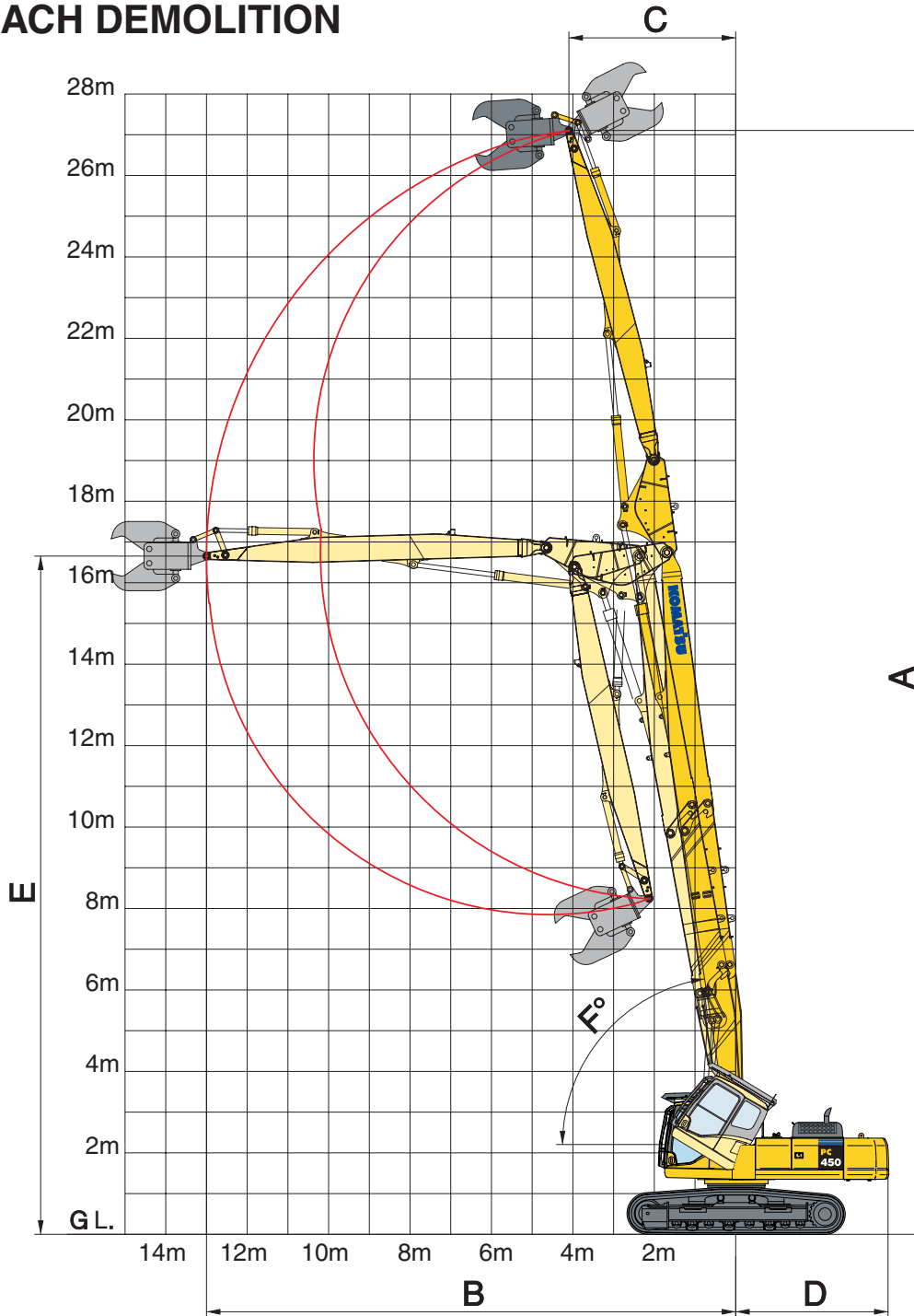
TRANSPORT DIMENSIONS		HIGH REACH	MEDIUM REACH
A	Overall width of upperstructure ¹⁾	2.995 mm	
B	Overall height of cab, with FOPS	3.485 mm	
B'	Overall height of cab, without FOPS	3.265 mm	
C	Tail length	3.705 mm	
D	Clearance under counterweight	1.320 mm	
E	Machine tail height	3.110 mm	
F	Ground clearance	685 mm	
G	Tumbler centre distance	4.350 mm	
H	Track length	5.355 mm	
I	Swing centre to front length	15.170 mm	11.165 mm
J	Track gauge retracted - extended (LC undercarriage) ²⁾	2.390 mm - 2.890 mm	
	Track gauge extended - extended (HWG undercarriage) ²⁾	2.280 mm - 3.130 mm	
K	Track shoe width	600 mm, 700 mm	
L	Overall track width 600 mm shoes (retracted - extended) (LC) ²⁾	2990 mm - 3490 mm	
	Overall track width 700 mm shoes (retracted - extended) (LC) ²⁾	3090 mm - 3590 mm	
	Overall track width 600 mm shoes (retracted - extended) (HWG) ²⁾	2.880 mm - 3.730 mm	
	Overall track width 700 mm shoes (retracted - extended) (HWG) ²⁾	2.980 mm - 3.830 mm	
M	Transport length	18.870 mm	14.870 mm
N	Overall height (to top of boom)	3.350 mm	3.340 mm

¹⁾ Overall width of upper structure excludes side guards, handrails and mirrors.
HWG = Hydraulic Wide Gauge undercarriage. LC = LC undercarriage

²⁾ Frame in retracted - extended position.

WORKING RANGE

HIGH REACH DEMOLITION

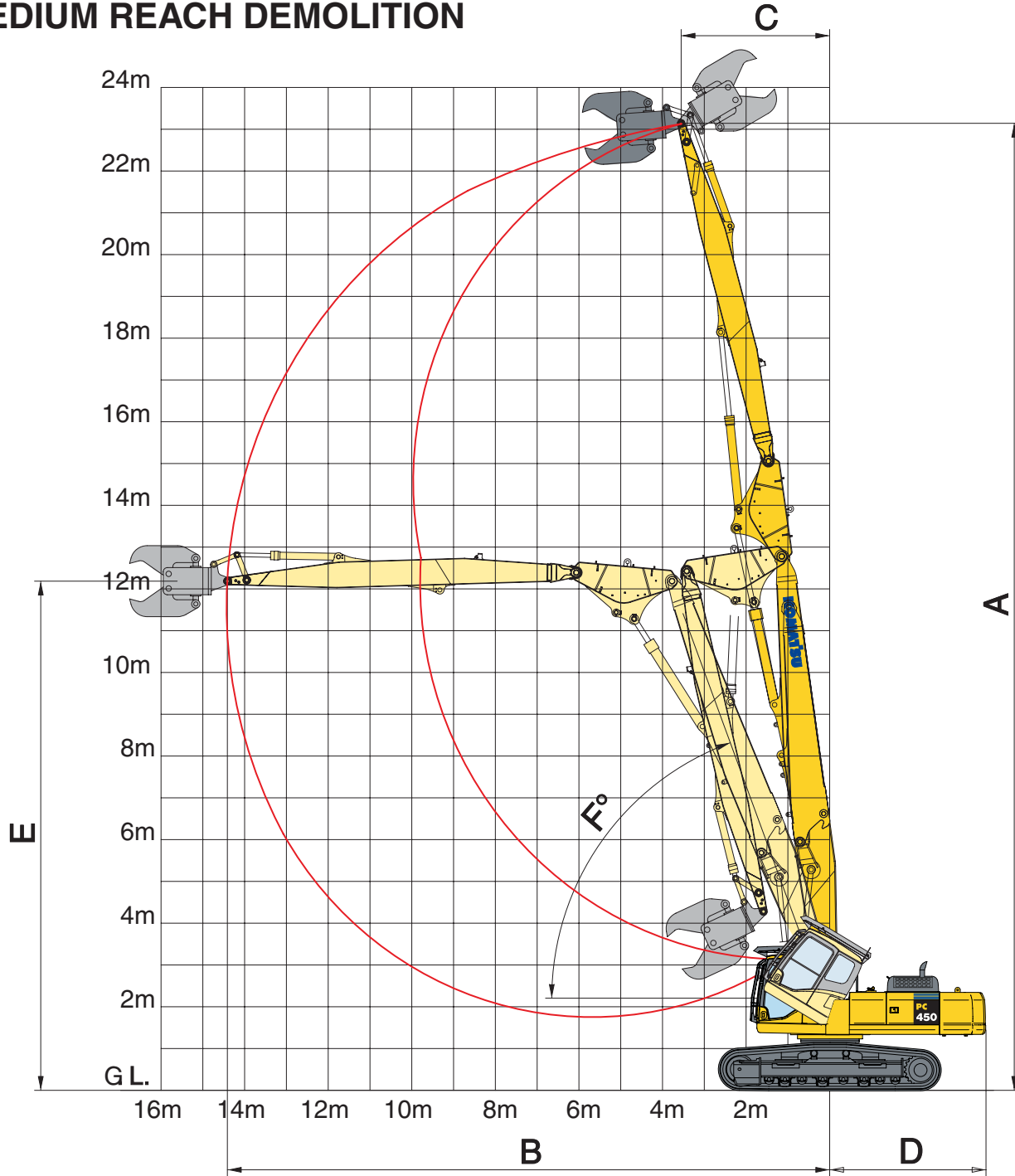


HIGH REACH CONFIGURATION		
A	Max. working height (to pin at arm end)	27.100 mm
B	Max. forward reach (2.500 kg attachment)	13.000 mm
	Max. forward reach (2.000 kg attachment)	14.000 mm
	Max. forward reach (1.250 kg attachment)	15.000 mm
C	Min. swing radius of arm end pin (max height)	4.100 mm
D	Tail swing radius	3.740 mm
E	Height at max. reach	16.650 mm
F	Minimum boom angle from ground at maximum height	81°
	Operating weight (600 mm shoes) ^{1) 2)}	58.870 kg

¹⁾ Includes 2.500 kg demolition attachment. ²⁾ HWG undercarriage adds approximately 7.180 kg to weight. This working range is applicable through 360 degrees (depending upon fitted attachment). For operator and jobsite safety, Komatsu recommend that high reach demolition machines work in line with the trackframe where ever possible.

WORKING RANGE

MEDIUM REACH DEMOLITION



MEDIUM REACH CONFIGURATION (remove 2nd boom section from High Reach Demolition)		
A	Max. working height (to pin at arm end)	23.140 mm
B	Max. forward reach (2.500 kg attachment)	14.410 mm
	Max. forward reach (2.000 kg attachment)	15.410 mm
	Max. forward reach (1.250 kg attachment)	16.410 mm
C	Min. swing radius of arm end pin (max height)	3.550 mm
D	Tail swing radius	3.740 mm
E	Height at max. reach	12.180 mm
F	Minimum boom angle from ground at maximum height	70°
	Operating weight (600 mm shoes) ^{1) 2)}	57.150 kg

¹⁾ Includes 2.500 kg demolition attachment. ²⁾ HWG undercarriage adds approximately 7.180 kg to weight. This working range is applicable through 360 degrees (depending upon fitted attachment). For operator and jobsite safety, Komatsu recommend that high reach demolition machines work in line with the trackframe where ever possible.

UES12200 10/2006 - Printed in Europe - This specification sheet may contain attachments and optional equipment that are not available in your area. Please consult your local Komatsu distributor for those items you may require. Materials and specifications are subject to change without notice. For other product information and standard features, please refer to brochure UESS1000 0602